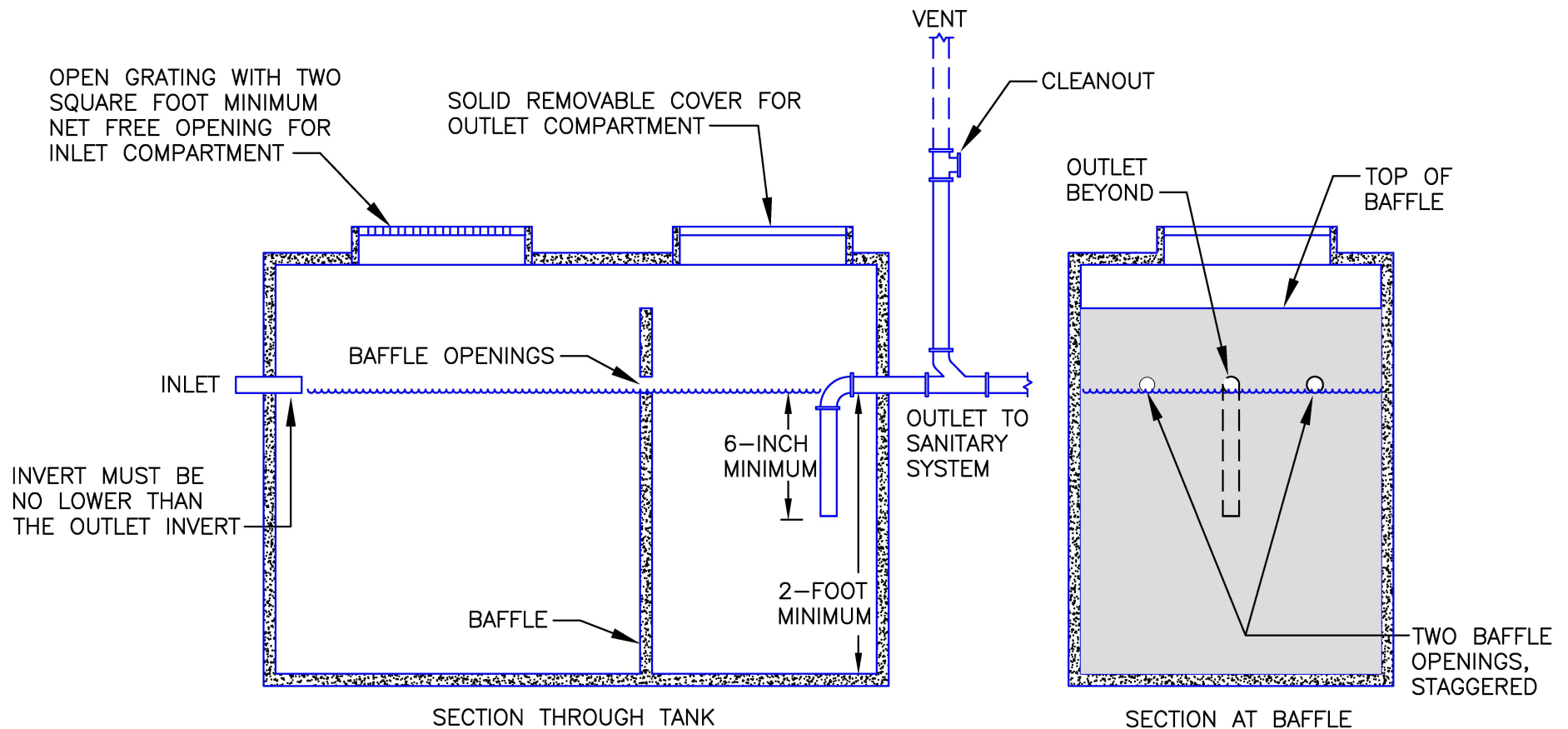


SAND INTERCEPTOR
M.R. CHAPTER 4714, SECTION 1016.0



- MUST BE CONSTRUCTED OF APPROVED WATERTIGHT MATERIAL(S).
- MUST PROVIDE AN INTERIOR BAFFLE FOR FULL SEPARATION OF INTERCEPTOR INTO TWO COMPARTMENTS.
- OUTLET PIPE MUST BE THE SAME SIZE AS THE INLET PIPE (3-INCH MINIMUM).
- MUST BE PROPERLY VENTED.
- THE NET FREE OPENING OF THE INLET COMPARTMENT MUST BE A MINIMUM OF 2 SQUARE FEET. FOR EACH 5 GPM FLOW OR FRACTION THEREOF OVER 20 GPM, THE AREA OF THE SAND INTERCEPTOR INLET COMPARTMENT MUST BE INCREASED BY 1 SQUARE FOOT.
- THE OUTLET COMPARTMENT MUST HAVE A MINIMUM AREA OF 50 PERCENT OF THE INLET COMPARTMENT.
- COVERS MUST BE SECURED, SET FLUSH WITH THE FINISHED FLOOR, AND BE SUITABLE FOR TRAFFIC IN THE AREA.
- TWO BAFFLE OPENINGS ARE REQUIRED. THEY MUST BE THE SAME DIAMETER AS THE OUTLET AND AT THE SAME ELEVATION AS THE OUTLET.