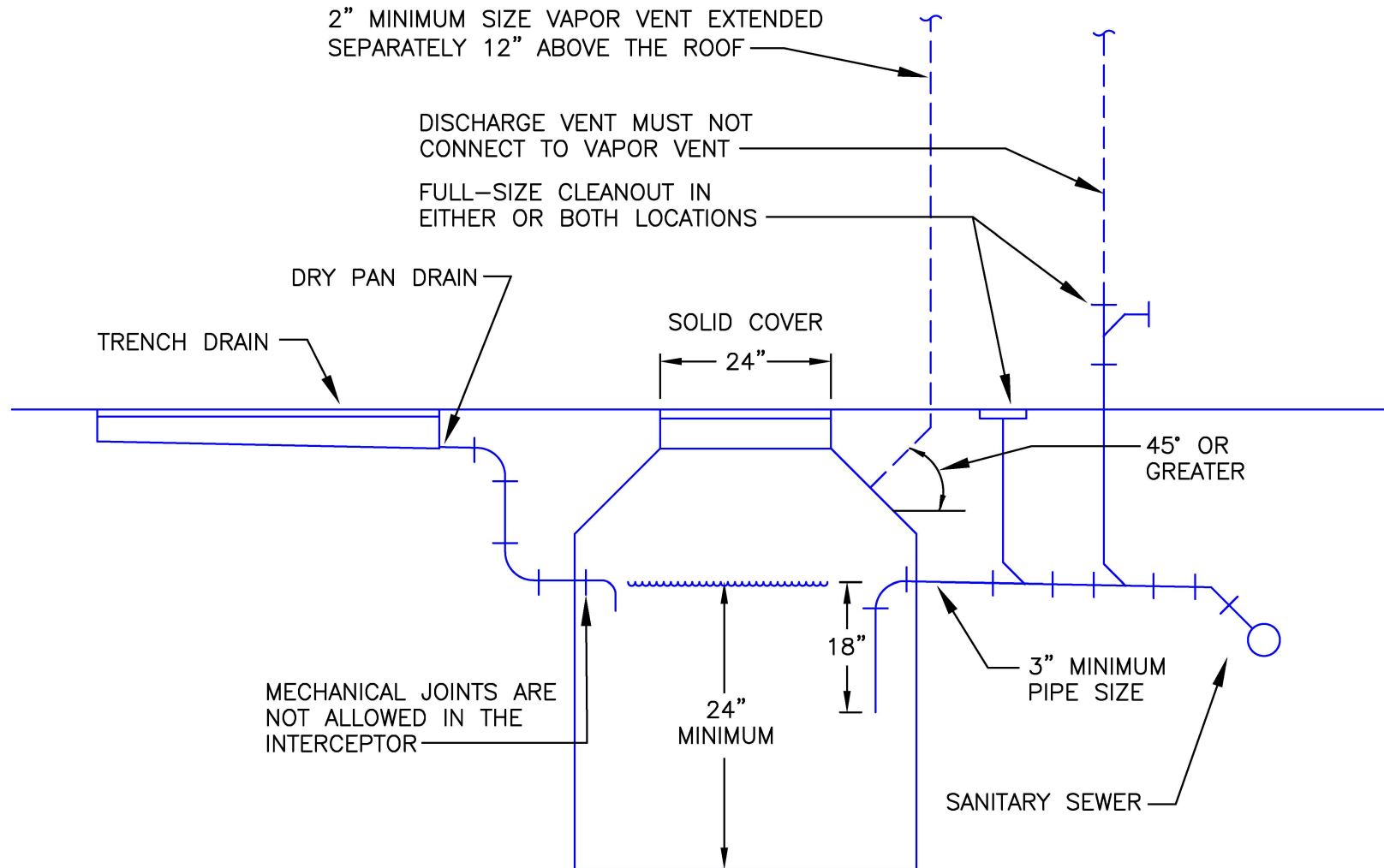


M.R. CHAPTER 4714, SECTION 1017.0



STORAGE AREA:

WHERE UP TO 3 MOTOR VEHICLES ARE STORED, THE INTERCEPTOR MUST HAVE A MINIMUM CAPACITY OF 6 CUBIC FEET. 1 CUBIC FOOT OF CAPACITY MUST BE ADDED FOR EACH VEHICLE UP TO 10 VEHICLES. FOR MORE THAN 10 VEHICLES, THE MINIMUM CAPACITY IS 35 CUBIC FEET.

SERVICE AREA:

WHERE VEHICLES ARE SERVICED, THE INTERCEPTOR MUST BE SIZED USING A NET CAPACITY OF 1 CUBIC FOOT FOR EACH 100 SQUARE FEET OF SURFACE TO BE DRAINED INTO THE INTERCEPTOR, WITH A MINIMUM OF 6 CUBIC FEET.